

Celebrating 60 years of bringing hope



  
THE  
LUTHERAN  
WORLD  
FEDERATION

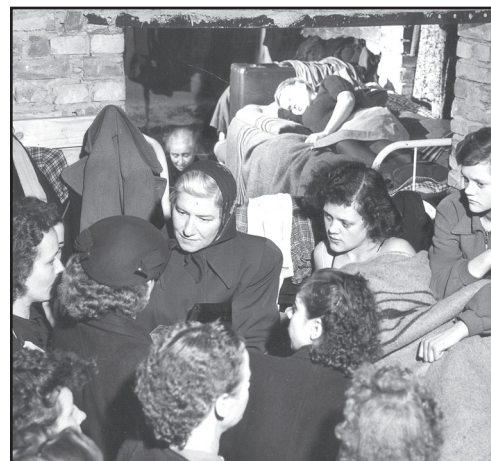
**1947** Bombs had ceased falling across Europe. Tens of thousands of Europeans (many of whom were Lutheran) were hungry, fearful, and homeless. The Lutheran family gathered in Lund, Sweden, to address the crisis. We pooled our resources and began an effort that resulted in thousands of people resettled, fed, and comforted. Together we formed the Lutheran World Federation. Together we brought hope.

Care packages brought by LWF staff into the camps after WWII often included containers of coffee, dried fruit, flour, sugar, warm clothing, and shoes. Sometimes the care packages contained a bit of chocolate. They always offered a bit of hope.

**2007** Today, 60 years after the founding of the LWF, a young mother will arrive at a refugee camp with her three children. They will be hungry, fearful, and homeless. The LWF will receive the family and offer them a shelter, basic cooking utensils, food, safety, comfort, and a bit of hope.

Bringing hope to refugees has been a hallmark of the LWF since its inception in 1947. Sixty years later we still bring hope to refugee families. The LWF is the second largest partner of the United Nations High Commissioner for Refugees. Today we are providing care and bringing hope to over 400,000 refugees around the globe.

Celebrating 60 years of bringing hope



  
THE  
LUTHERAN  
WORLD  
FEDERATION

**1947** Bombs had ceased falling across Europe. Tens of thousands of Europeans (many of whom were Lutheran) were hungry, fearful, and homeless. The Lutheran family gathered in Lund, Sweden, to address the crisis. We pooled our resources and began an effort that resulted in thousands of people resettled, fed, and comforted. Together we formed the Lutheran World Federation. Together we brought hope.

Care packages brought by LWF staff into the camps after WWII often included containers of coffee, dried fruit, flour, sugar, warm clothing, and shoes. Sometimes the care packages contained a bit of chocolate. They always offered a bit of hope.

**2007** Today, 60 years after the founding of the LWF, a young mother will arrive at a refugee camp with her three children. They will be hungry, fearful, and homeless. The LWF will receive the family and offer them a shelter, basic cooking utensils, food, safety, comfort, and a bit of hope.

Bringing hope to refugees has been a hallmark of the LWF since its inception in 1947. Sixty years later we still bring hope to refugee families. The LWF is the second largest partner of the United Nations High Commissioner for Refugees. Today we are providing care and bringing hope to over 400,000 refugees around the globe.



*The LWF: 66 million Lutherans do make a difference!*



*The LWF: 66 million Lutherans do make a difference!*